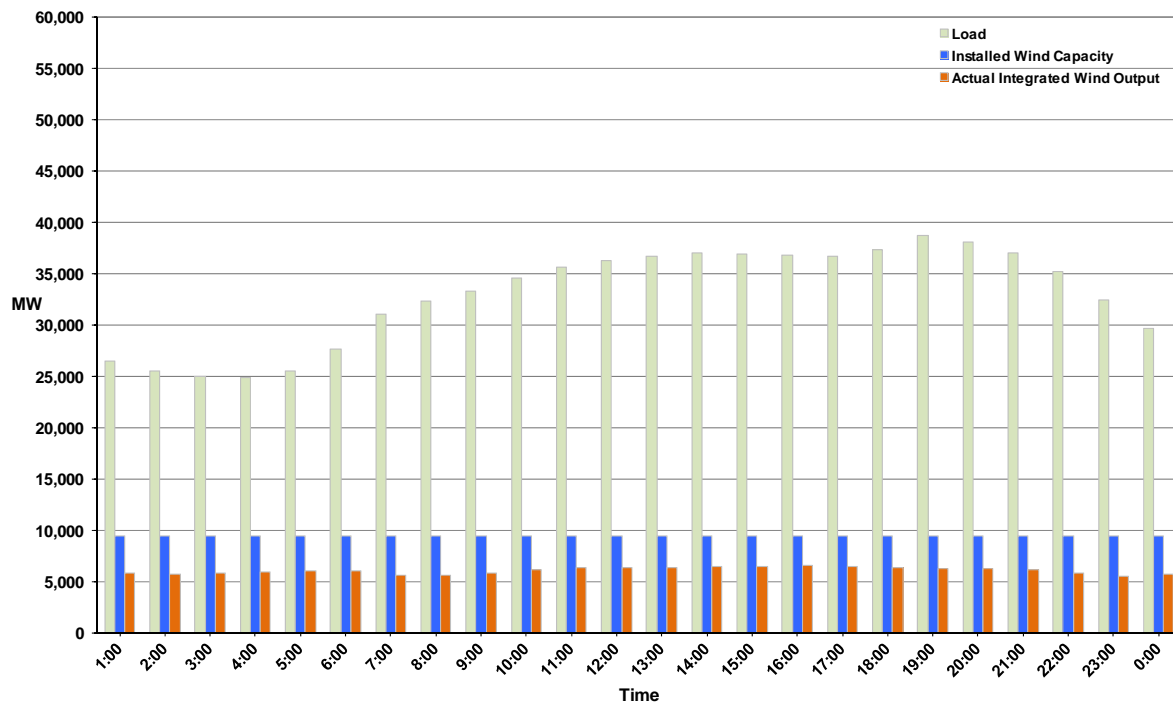




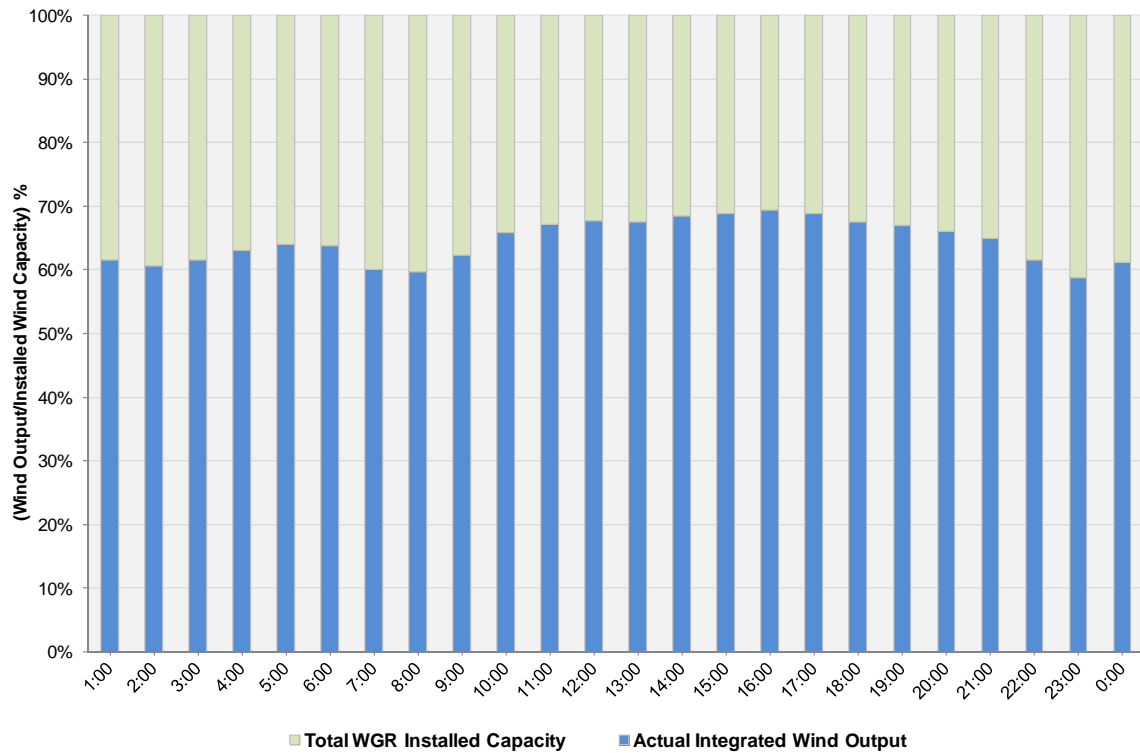
## ERCOT Grid Operations Wind Integration Report: 11/07/11

Peak Load	<b>38,740 MW</b>
Load Peak Hour	<b>19</b>
Wind over Peak	<b>6,314 MW</b>
Wind Record 10/07/11	<b>7,400 MW</b>
Max Wind Value	<b>6,619 MW</b>
Wind Peak Time	<b>15:25</b>
Wind Integration %	<b>17.97%</b>

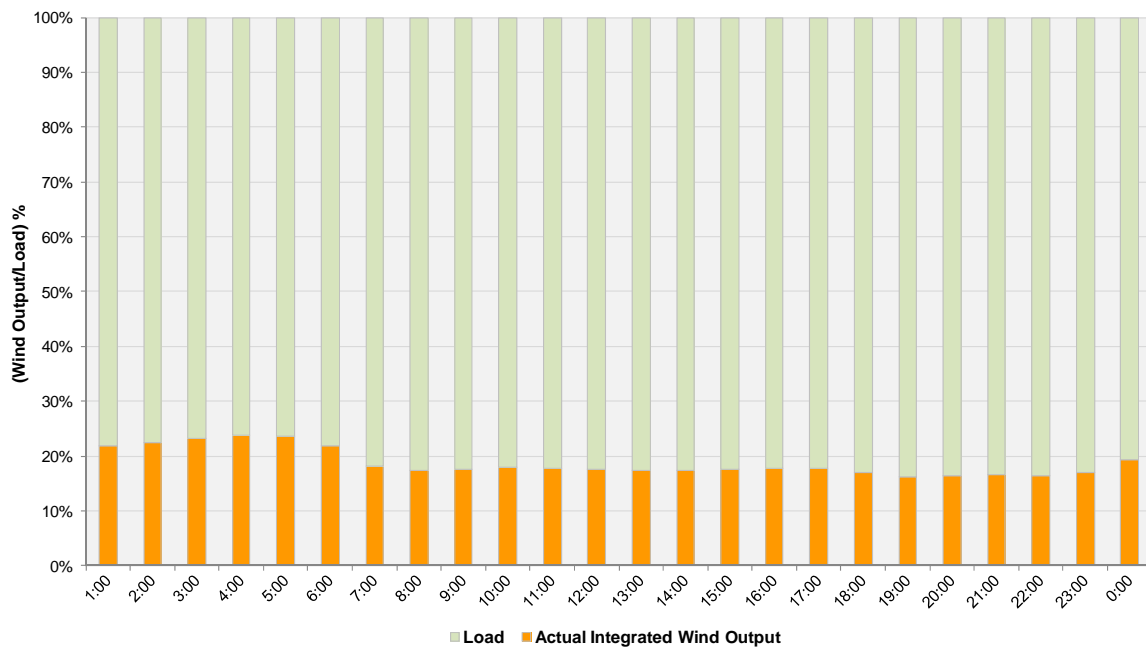
Hourly Average Actual Load vs. Actual Wind Output  
11-07-2011



**Actual Wind Output as a Percentage of the Total Installed Wind Capacity**  
**11-07-2011**



**Actual Wind Output as a Percentage of the ERCOT Load**  
**11-07-2011**



ERCOT Load vs. Actual Wind Output 10/31/2011 - 11/7/2011

